



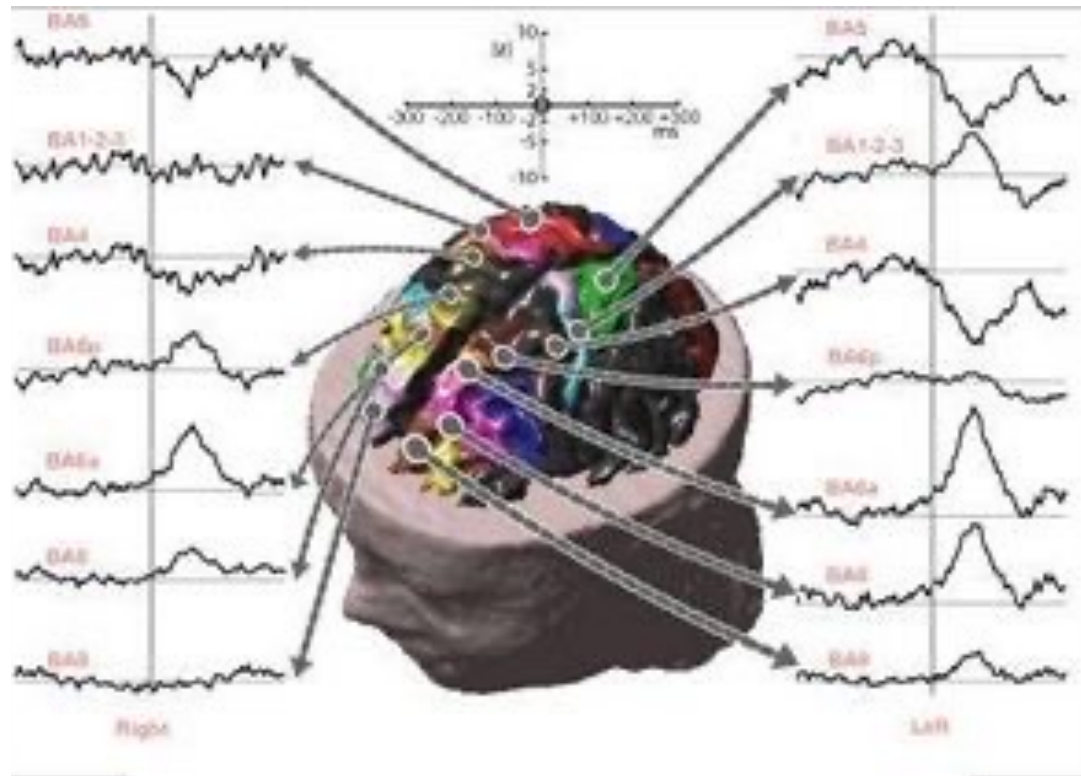
META Consciousness:
Psychological
Health Issues

Introduction to Constellations



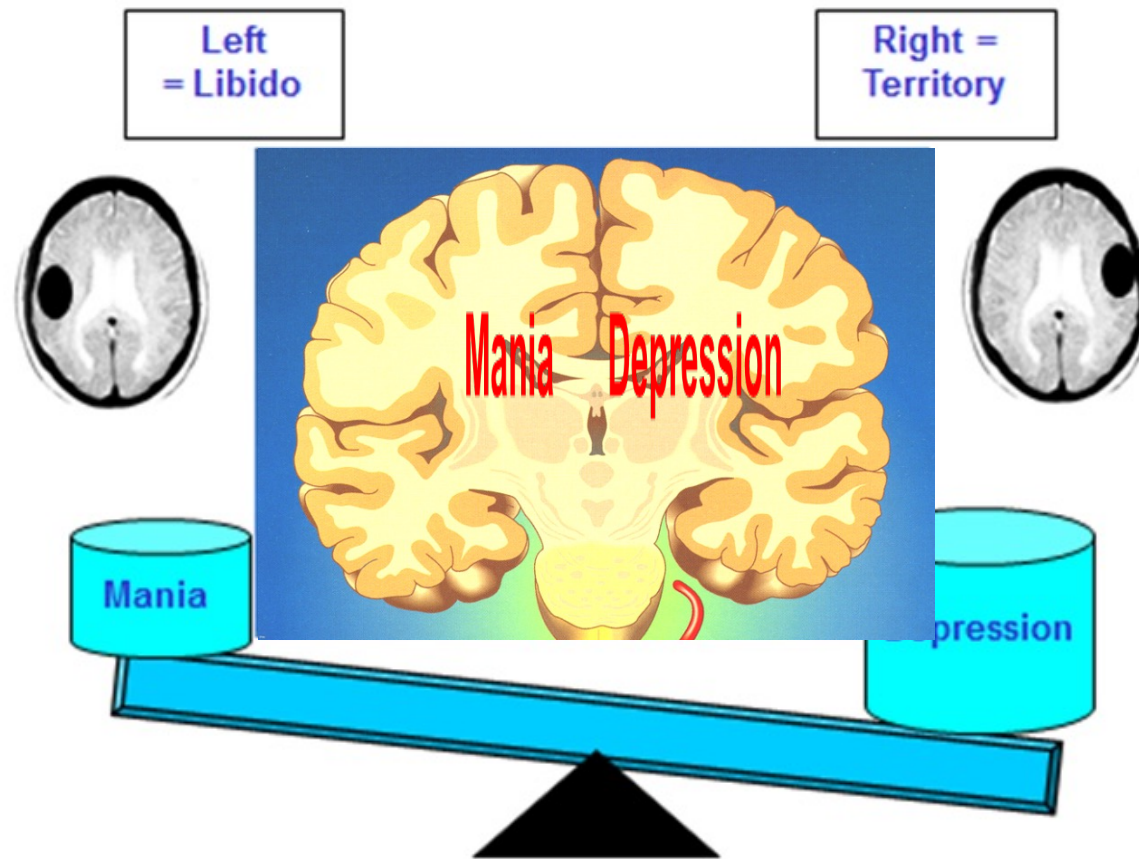
- Why is it called a constellation?
- Why do we have constellations?
- Who has constellations?

2 Hemispheres Vibrate in Balanced Rythm



Conflict Shock lands on one or both sides

OUT OF BALANCE



The Mind-Body Connection



For every UDIN it will show in brain
For every UDIN it will show in organ

SURVIVAL STRATEGIES
IN ORDER TO COPE

Introduction to Constellations

- Most constellations found in the cerebral cortex
- A constellation is ...
- A bilateral constellation is ...

Constellations - method

- 1) What constellation does the client have?
- 2) Which organ tissue belongs to the constellation? SOPT
- 3) Possible conflict themes does the client have with this constellation?
- 4) Rather than release immediately start to downgrade
Transform a hyper-constellation into a hypo-constellation
This avoids contraindications such as healing peak threshold

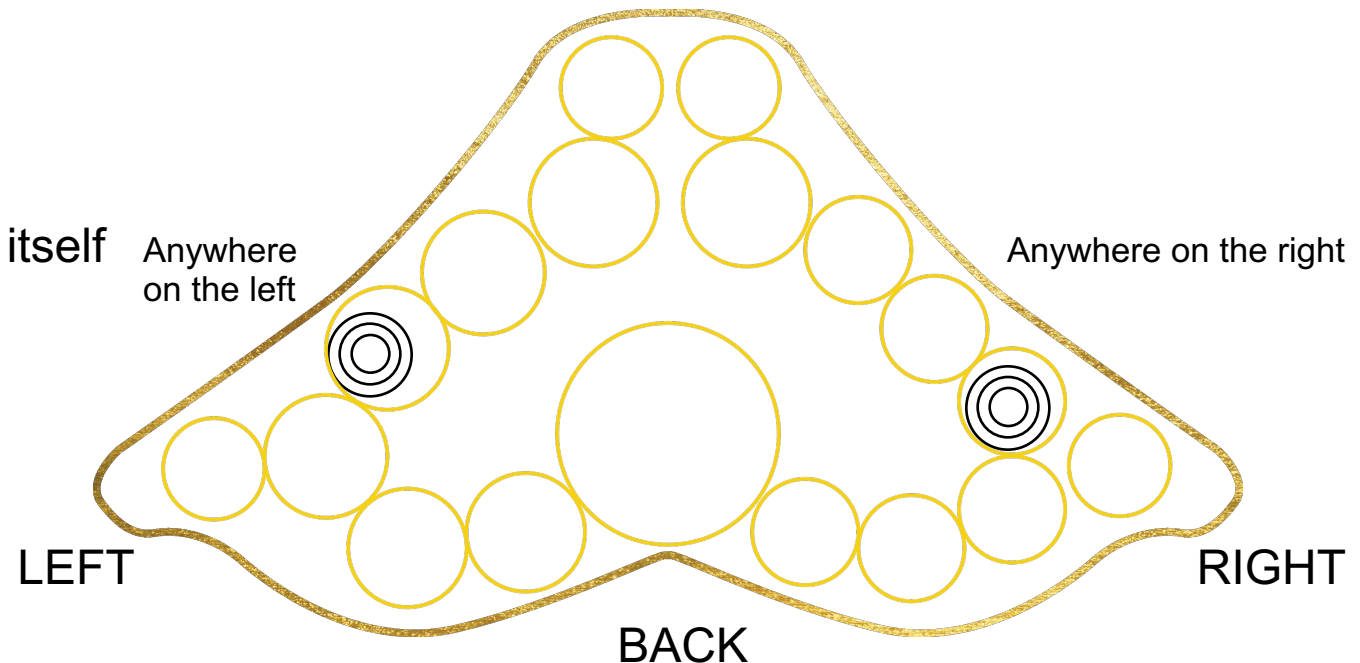
Top10 „psychological disorders“

1. Depression (*beyond grief*)
2. Eating disorders (*Anorexia, Bulimia, Binge Eating*)
3. ADHD (*attention & focus deficit, hyperactivity*)
4. Compulsions (*obsessional washing, compulsive motions*)
5. Phobias (*social -, with things or spaces*)
6. Anxiety disorder & Panic attacks
7. Schizophrenia (*hallucinations, delusions*)
8. Bipolar (*manic-depressive*)
9. Autism (*social contact & sensitivity disorder*)
10. Personality (*antisocial, aggressive, paranoid*)

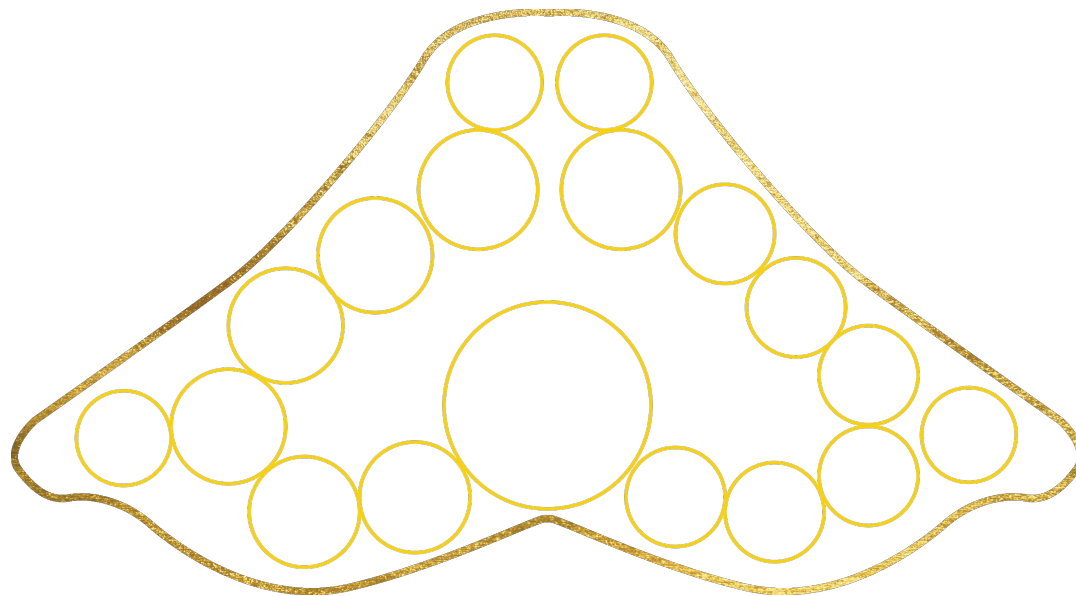
Passive Constellation BRAIN STEM

characteristics:

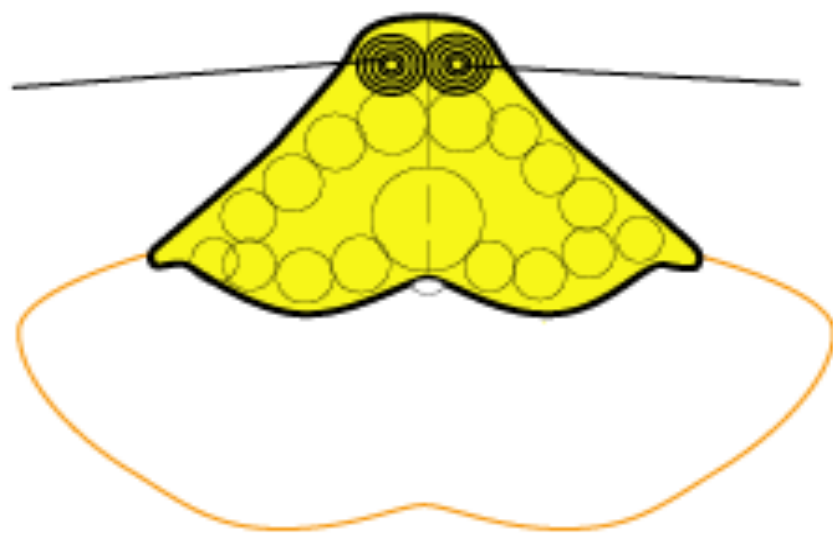
- Stiffened / "frozen"
- Sitting / standing still
- waiting
- "No" solution
- postponement
- Skip
- "Go to seed"
- The solution must come by itself
- stops
- Catatonic



Disoriented, Stunned



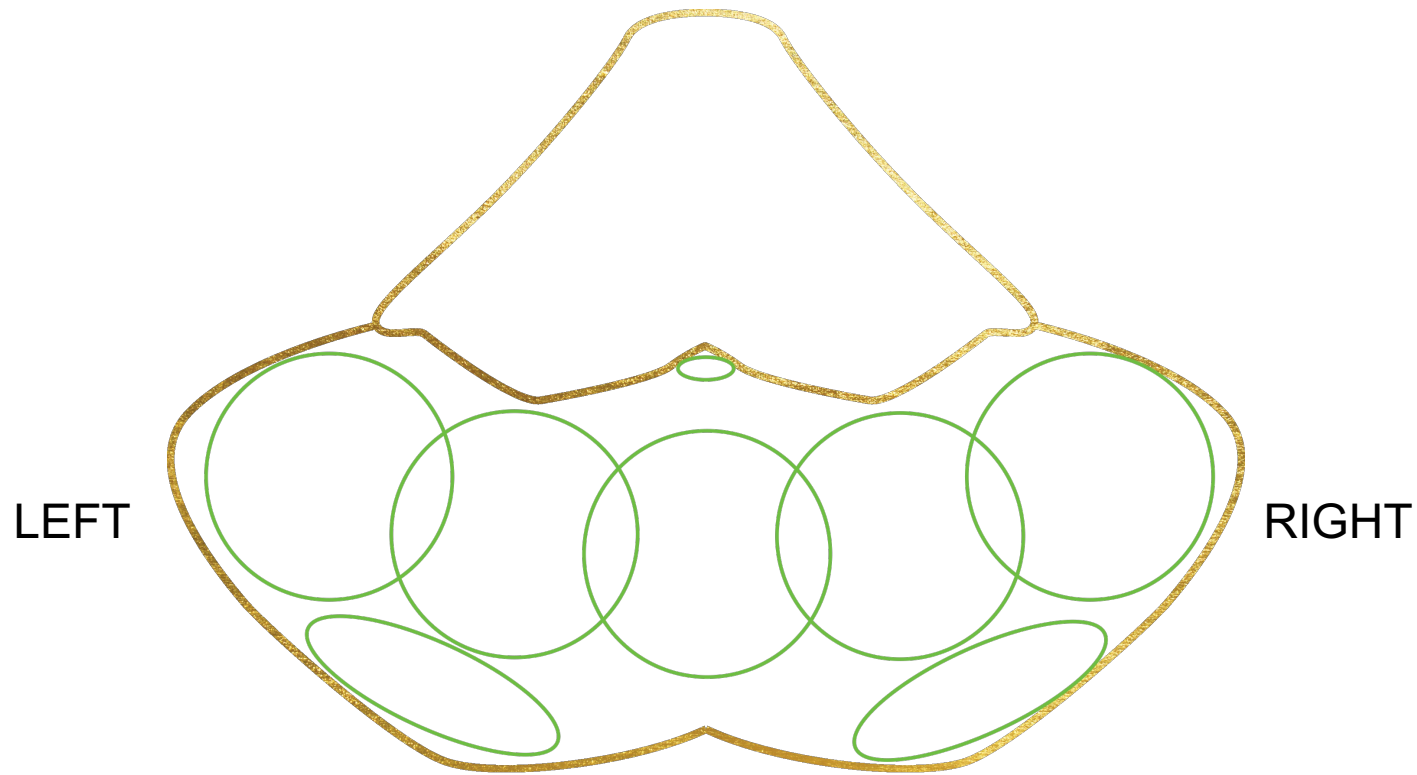
kidney left
(collecting tubules)
(abandonment-
isolation-conflict)



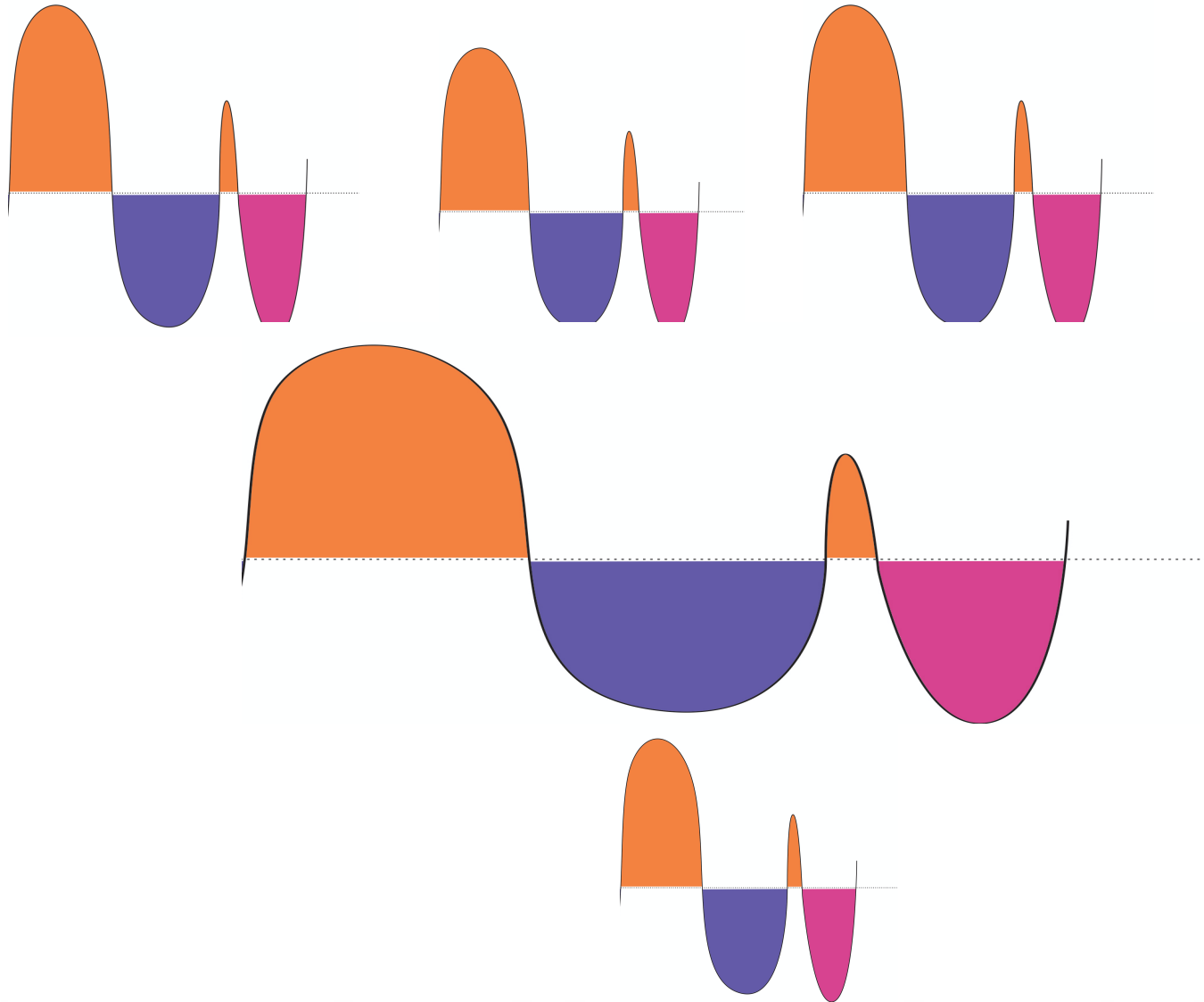
kidney right
(collecting tubules)
(abandonment-
isolation-conflict)

locally disoriented, consternated, stunned, bewildered

Constellations in the cerebellum



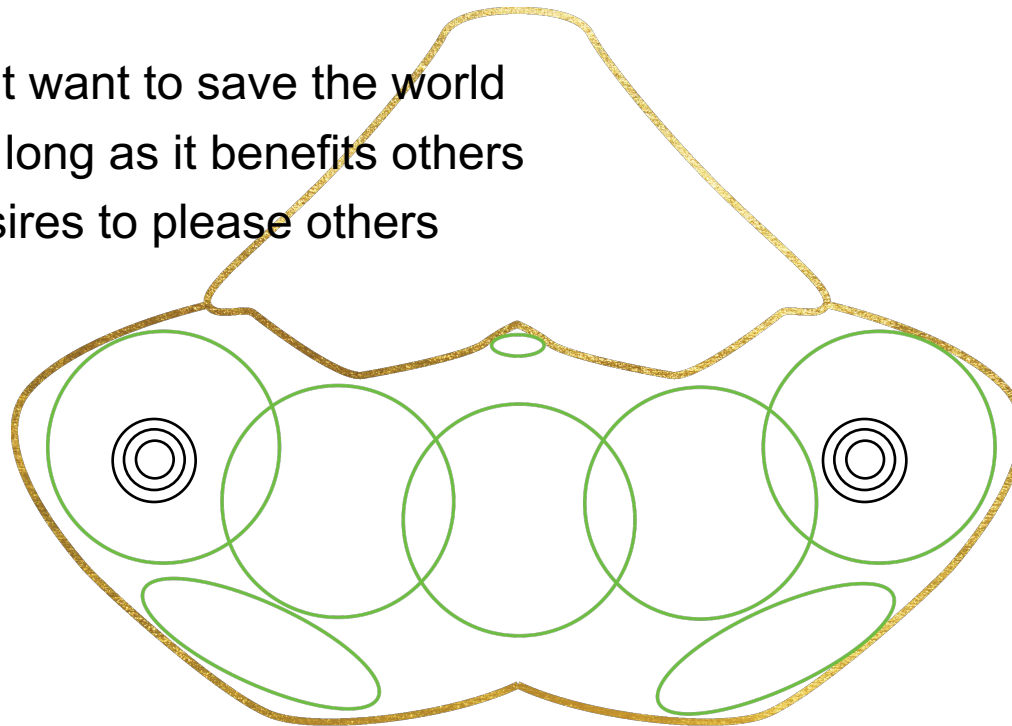
Constellations in the cerebellum



Mother Teresa constellation or Fawn Response ?

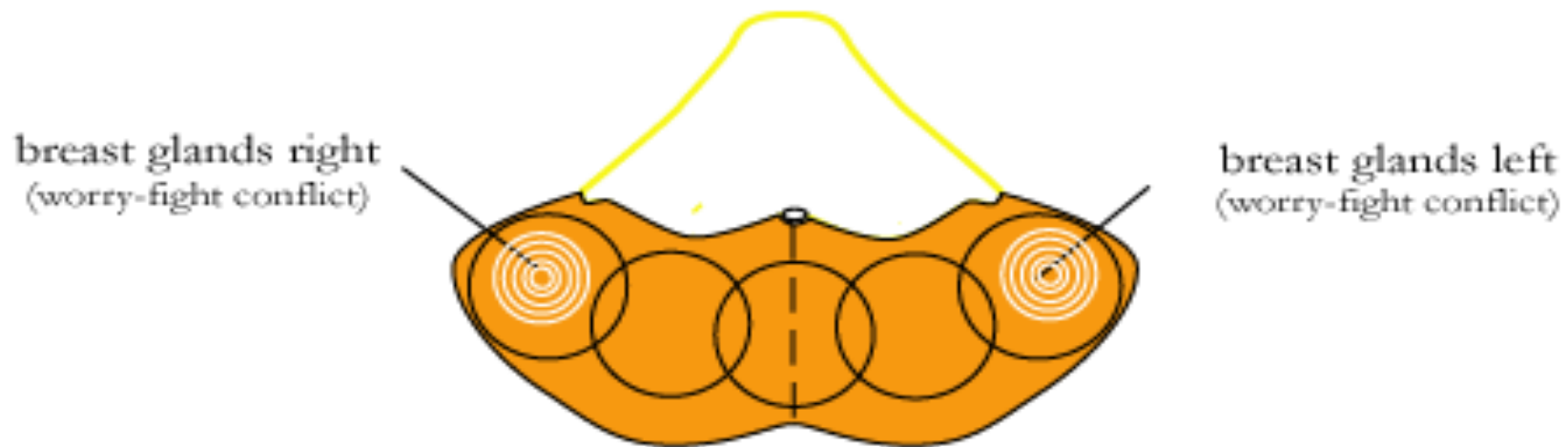
characteristics:

- I do not care about myself, but want to save the world
- Willing to lose everything, as long as it benefits others
- Compromise on their own desires to please others
- *martyr*



Emotional Numbness

Schizophrenic constellation: Emotional collapse, burned out



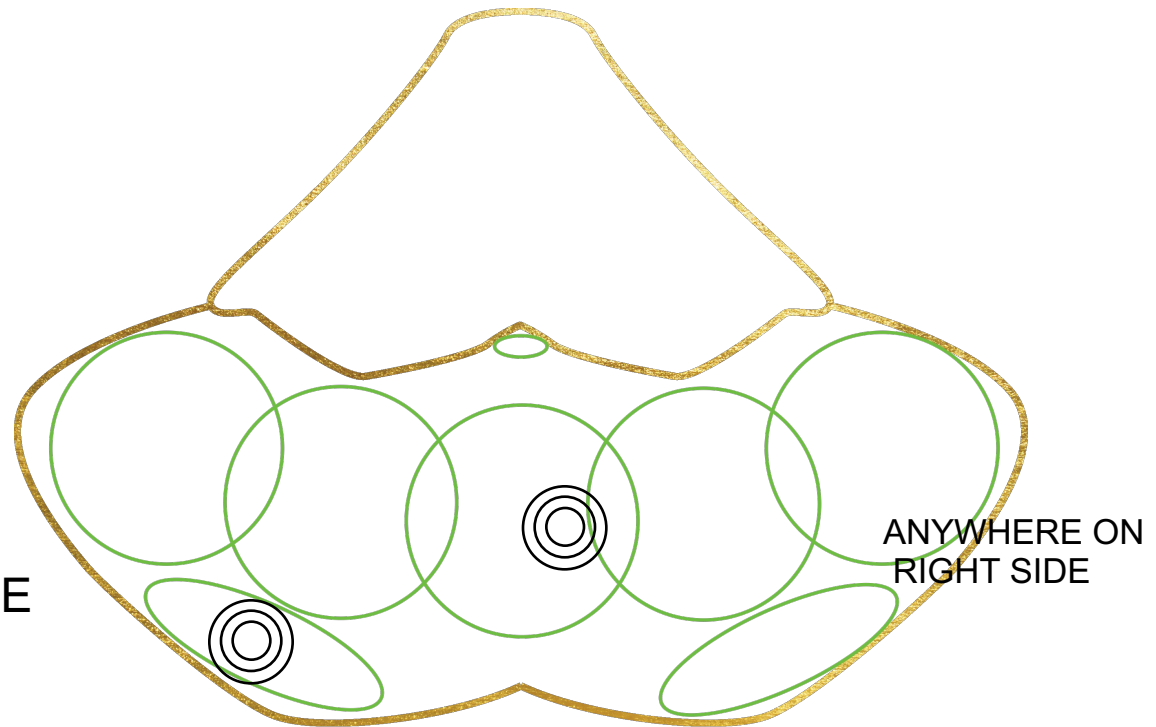
feeling emotionally dead, burned out, asocial behavior

Indifferent constellation

characteristics:

- lack of empathy
- indifferent
- cold
- reserved
- disinterested
- without conscience
- numb
- Without joy
- burned

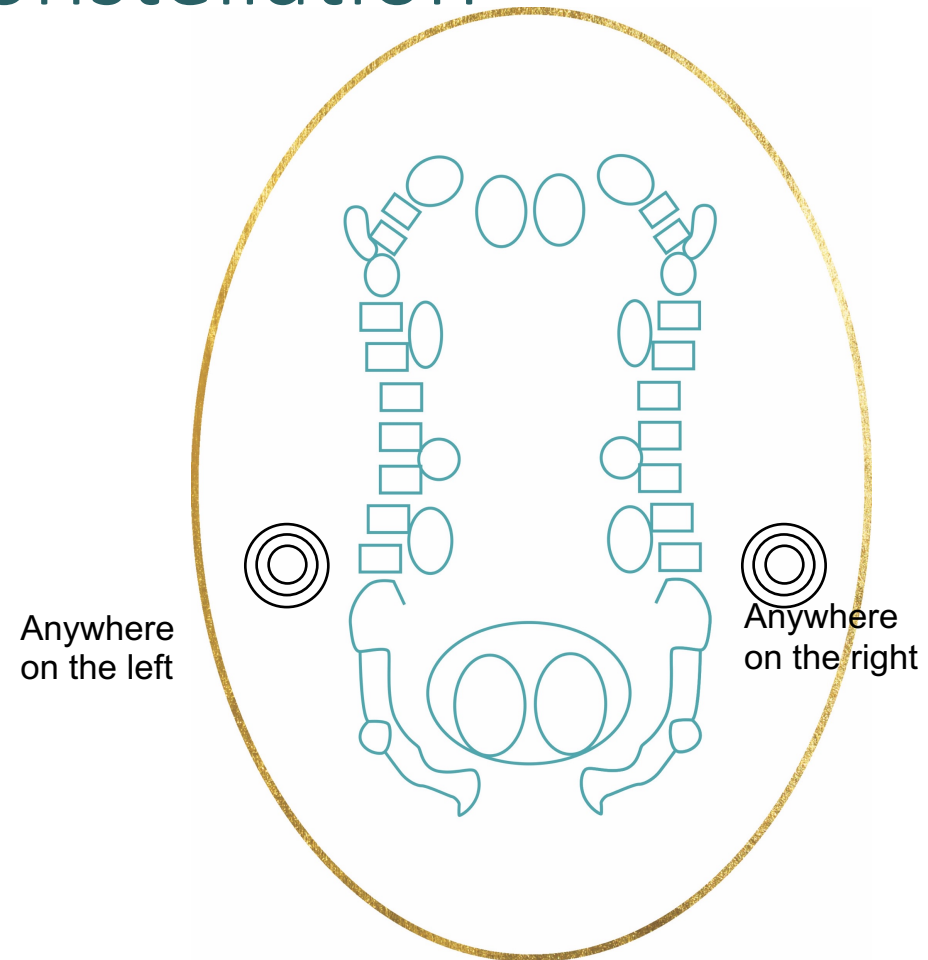
ANYWHERE
ON LEFT SIDE



Megalomania Constellation

characteristics:

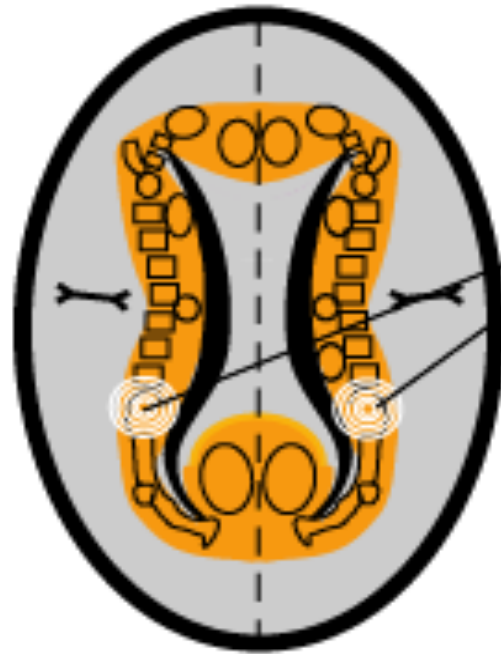
- exaggerated self-confidence
- braggart
- I do best
- I can easily become world champion
- that I learn in no time
- do not have to prove it
- know better than experts
- see themselves as flawless
- can not admit mistakes
- Short man/Napoleon
- Narcissist



Megalomania/Gaslight

overestimation of own's
ability, delusions of
grandeur present
in 1. and 2. phase

- 1. phase: osteolysis
- 2. phase: recalcification
with leukemia

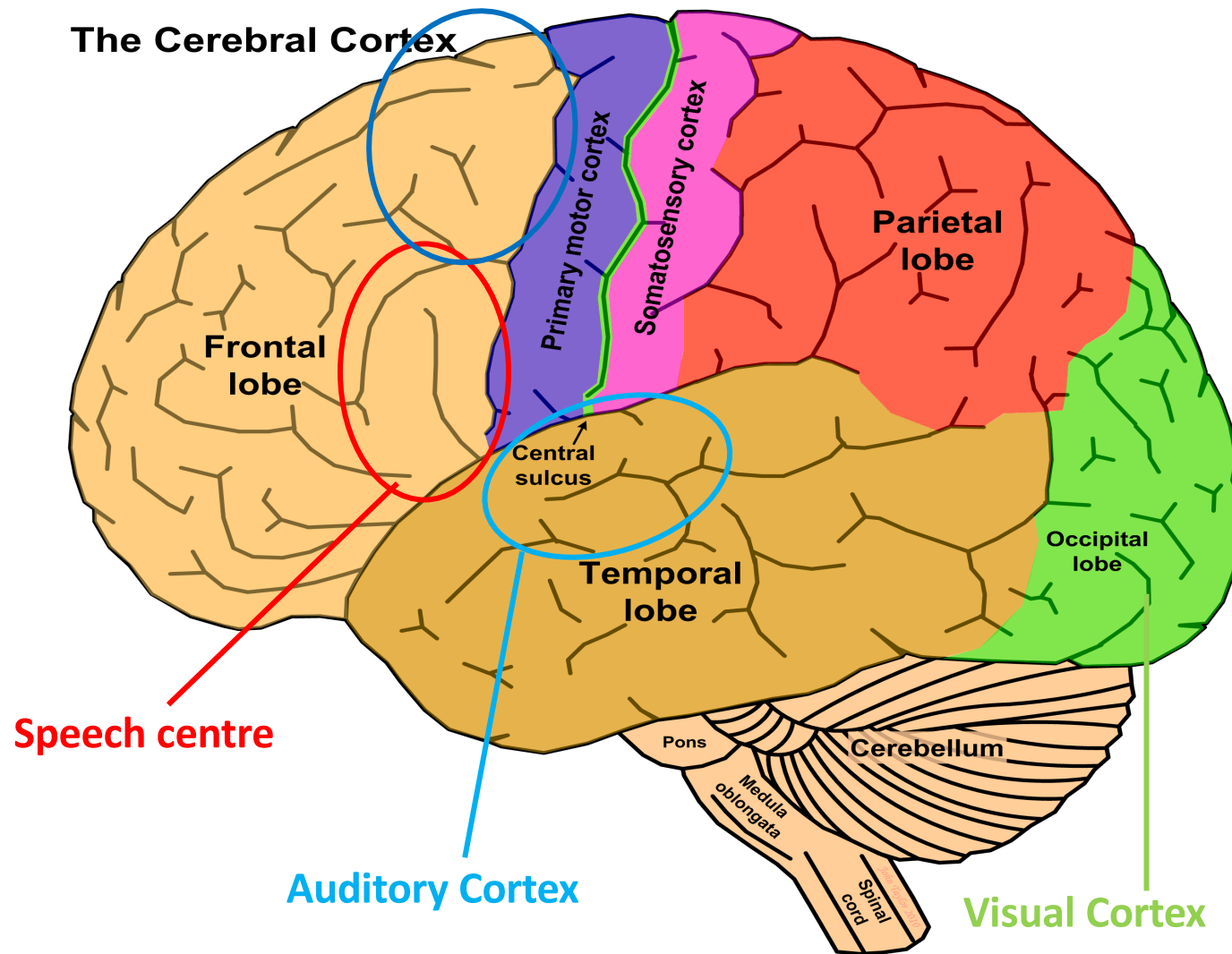


Bones - Pelvis
(selfdevaluation-conflict)

2 brain relay on opposite
sides of the cerebral medulla

any brain selfdevaluation-relay on opposite sides of the cerebral medulla

Learned Motorics



The **Cerebral Cortex** consists of „grey substance“, nerve cell bodies with their nuclei.

It is only 2-4 mm thin and it's surface is enlarged through **cleavage**.

The Cerebral Cortex is divided into **lobes**.

Evolution, Embryonic Connection

Embryology: Within the first 20 days of the embryonic stage the three germ layers develop from which all organs and tissue is formed.



Our complete organism can be organized by:

- * organ incl. cell-tissue reaction
- * germ layers with brain relays
- * conflict content and the two-phases

Brain Stem

Inner
Germ Layer
Endoderm



Survival,
Digestion, Reproduction

Cerebellum

Middle
Germ Layer
Mesoderm



Protection

Cerebral Medulla

Middle
Germ Layer
Mesoderm



Stability,
Performance

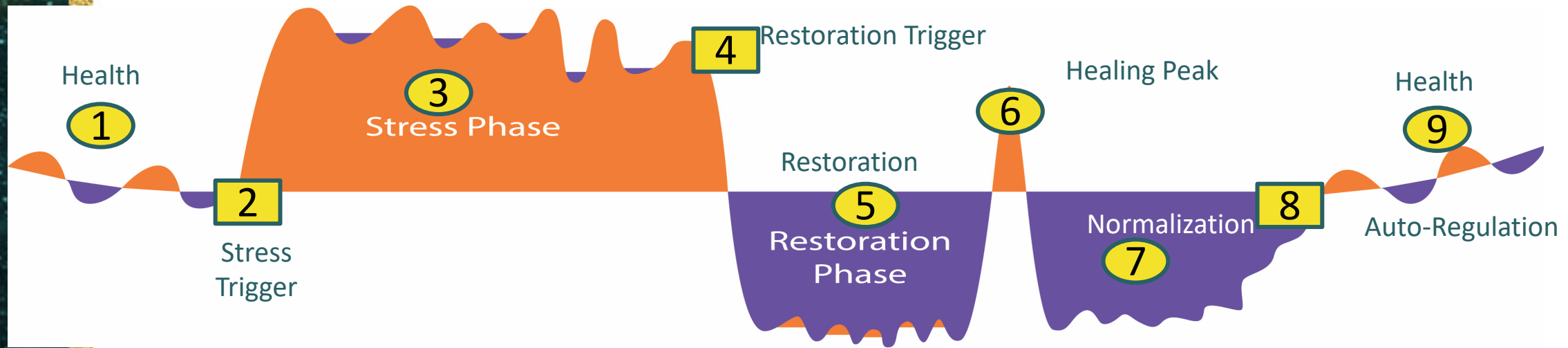
Cerebral Cortex

Outer
Germ Layer
Ectoderm



Communication,
Hierarchy,

Cerebral Cortex – tissue reaction -/+



3) Stress Phase: -

Direct functional change (e.g. sensitivity, motoric), in ducts widening, later tissue degradation and ulcera

5) Regeneration Phase A: -

Underfunction through swelling, sometimes very high fever, inflammation

6) Healing Peak: -

Reversal, possibly absence

7) Regeneration Phase B: +

Tissue repair often in excess, scarring

8) Auto-Regulation Normalization

Cerebr

Association according to side dominance:

dominant side – partner,
non-dominant side – nest

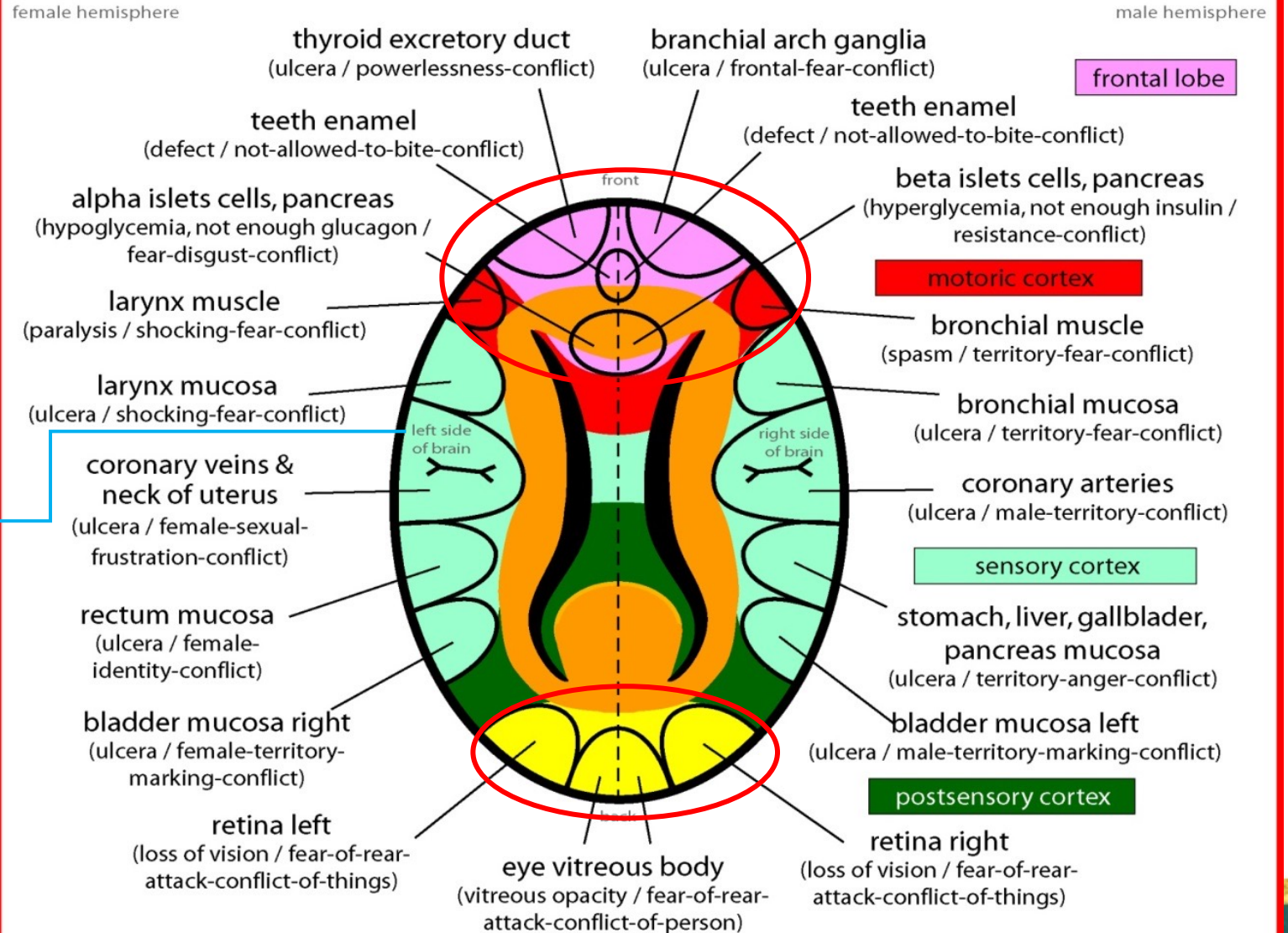
Territorial areas affect hormonal status!

Activation:

Contact, social status

Brain-Organ connection crossed!

The connections between cerebral cortex and organ are crossed, meaning the left side of the body is represented in the right side of the brain and visa versa. Right-Left handedness is relevant. The 1st conflict always hits the **men on right** and **woman on left** and the 2nd conflict the opposite hemisphere. Left handed woman or men have same conflict content but it hits the other hemisphere.



Frontal Fear - Helplessness

Powerlessness:

Need to do some-thing but
can't



Frontal fear, overwhelm:

Sees a catastrophe coming

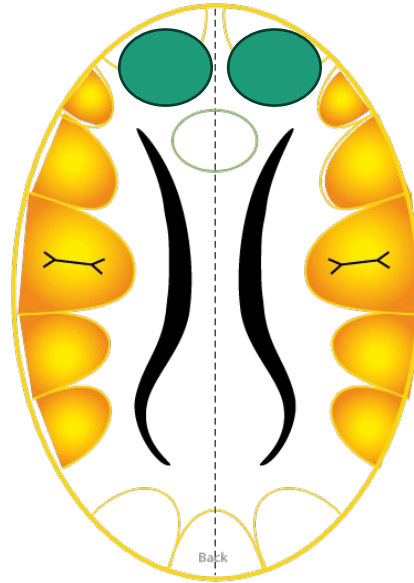


Both conflicts together create **Anxiety constellation, panic attacks**

Frontal Fear - Helplessness

Primeval thyroid
excretory ducts

Powerlessness (RH)
Frontal fear (LH)



Anxiety constellation

Primeval pharyngeal /gill
arches

Frontal fear (RH)
Powerlessness (LH)

Both relays in **Stress**: Constant fear of future, anxiety, worries

Restoration frontal headache

Healing Peak: panic attack

Reactions in the frontal relays

- Sensitivity according to **Inner-Skin-Pattern**: Hyperesthesia in **Stress phase** and **Healing Peak** (slight dragging pain in the respective throat/neck areas)
- **Enhanced release** of thyroxin in **Stress phase** of „thyroid excretory ducts“ because of „widening“
- Hypoesthesia & swelling, later scarring in **Regeneration phase**, **Healing Peak** with **absence** (spaced out)
- **Underfunction** of thyroid in **Regeneration phase** & after **recurrences** (unfunctional tissue because of scarring), **goiter** & „cold nodules“ of thyroid
- Swelling & tissue growth in the area of gill arches possibly diagnosed as **Non-Hodgkin-Lymphoma**

Frontal Panic

Thyroid “ducts”

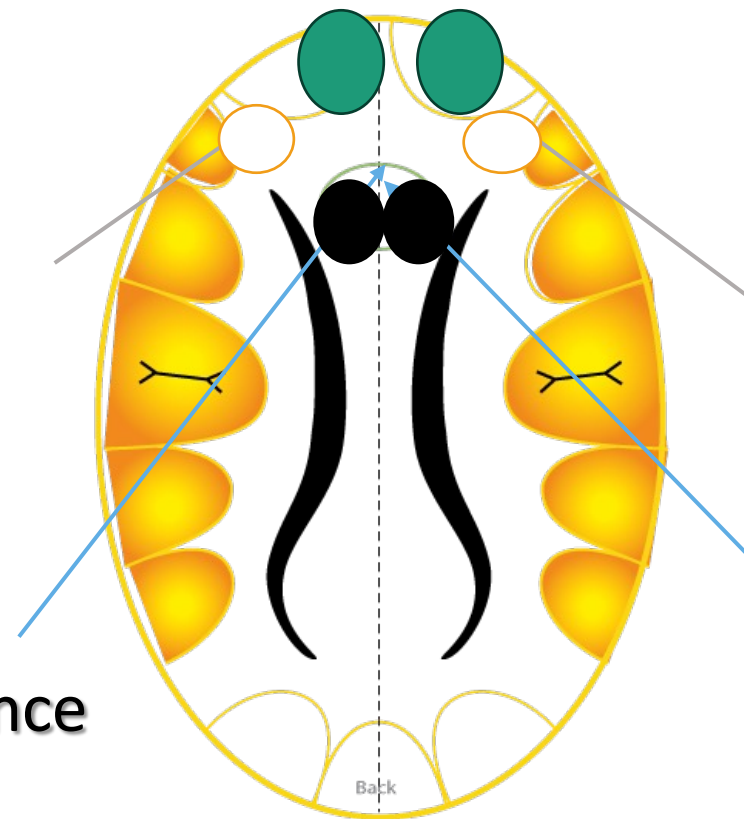
Powerlessness (RH)
Frontal fear (LH)

Larynx muscles & Speech center

Speechlessness (RH)
Territory fear (LH)

Glucagon Relay

Disgust (RH) Resistance
(LH)



Primeval gill arches

Frontal fear (RH)
Powerlessness (LH)

Bronchial muscles Territory
fear (RH) Speechlessness
(LH)

Insulin Relay

Resistance (RH) Disgust
(LH)

Threat from behind

- **UDIN**: could not see danger coming
- **Chronic**: fearing threat from behind
- **Strategy**: Tunnel vision / "blinders" for focus ahead
- Often combined with tight neck muscles



Both sides **stress-active** lead to **persecution complex, paranoia**

Paranoia

Both relays in **Stress phase**: Paranoia, Visions, conspiracy theories
Healing Peak:
Panic attack

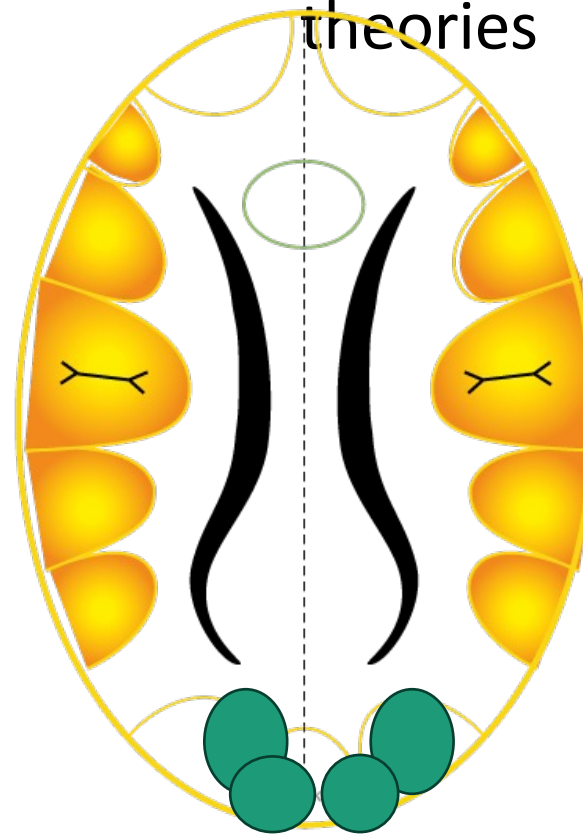
Retina

left halves of both eyes
fearing things

or

Vitreous body

left halves of both eyes
fearing persons



Retina

right
halves of both eyes fearing
things

or

Vitreous body

right halves of both eyes
fearing persons

Reactions of the Occipital Relays

- Both relays relate to nerve functions
- **Stress phase:** narrowing (tunnel vision) or opacity (scotoma) of the field of view
- Eye muscle motoric also affected (staring, eye muscle paralysis)
- **Regeneration phase:** swelling, increased inner eye pressure, later scarring
- temporary retina detachment (partial), more dramatic when enhanced by stress-active KCT!
- Mouches Volantes (floaters)

No way out

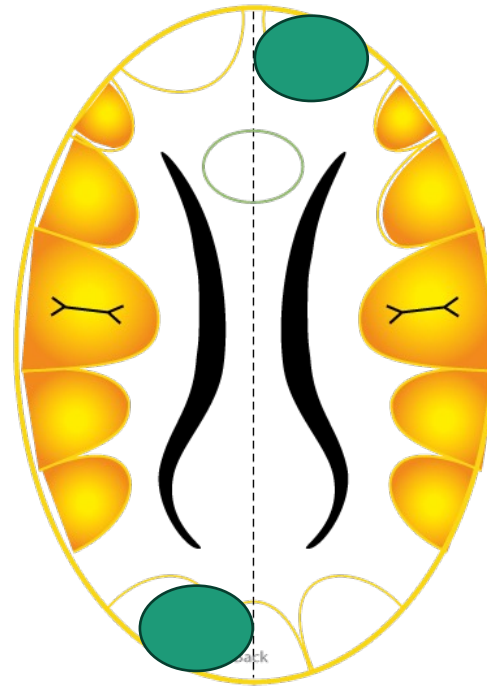
Thyroid “ducts” or “Gill arches”

Powerlessness, Frontal fear

together with

Retina or Vitreous body

Threat from behind



Cornered

Constellation also possible within one hemisphere!

At least 2 Relays in **Stress**: unpredictable reaction (break out or freeze)

Healing Peak: Panic attack

Amplified Senses, Hallucinations

Inner ear/cochlea

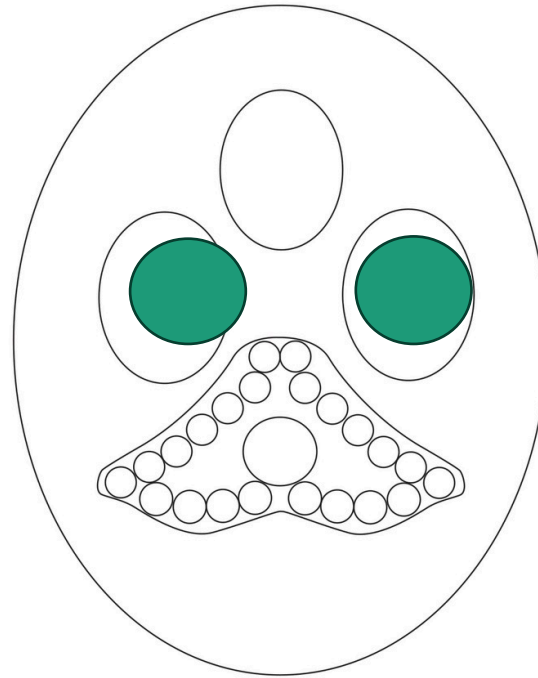
& right

Acoustic trauma/s

or

Social/territorial hearing
conflict/s

left



Hearing constellation

In territorial hearing conflicts even
manic-depressive reactions.
If conflict both ears = vertigo

Both relays in **Stress**: hears trauma-related sound (tinnitus) or voices (paranoia). **Restoration**: acute hearing loss

Phobias

- The VAKOGS stress triggers conditioned in a UDIN create a phobia as alarm mechanism.
- The phobias related to „Anxiety relays“ are especially dramatic.
- Phobias are easy to resolve when their creation is cleared up & renegotiated!

